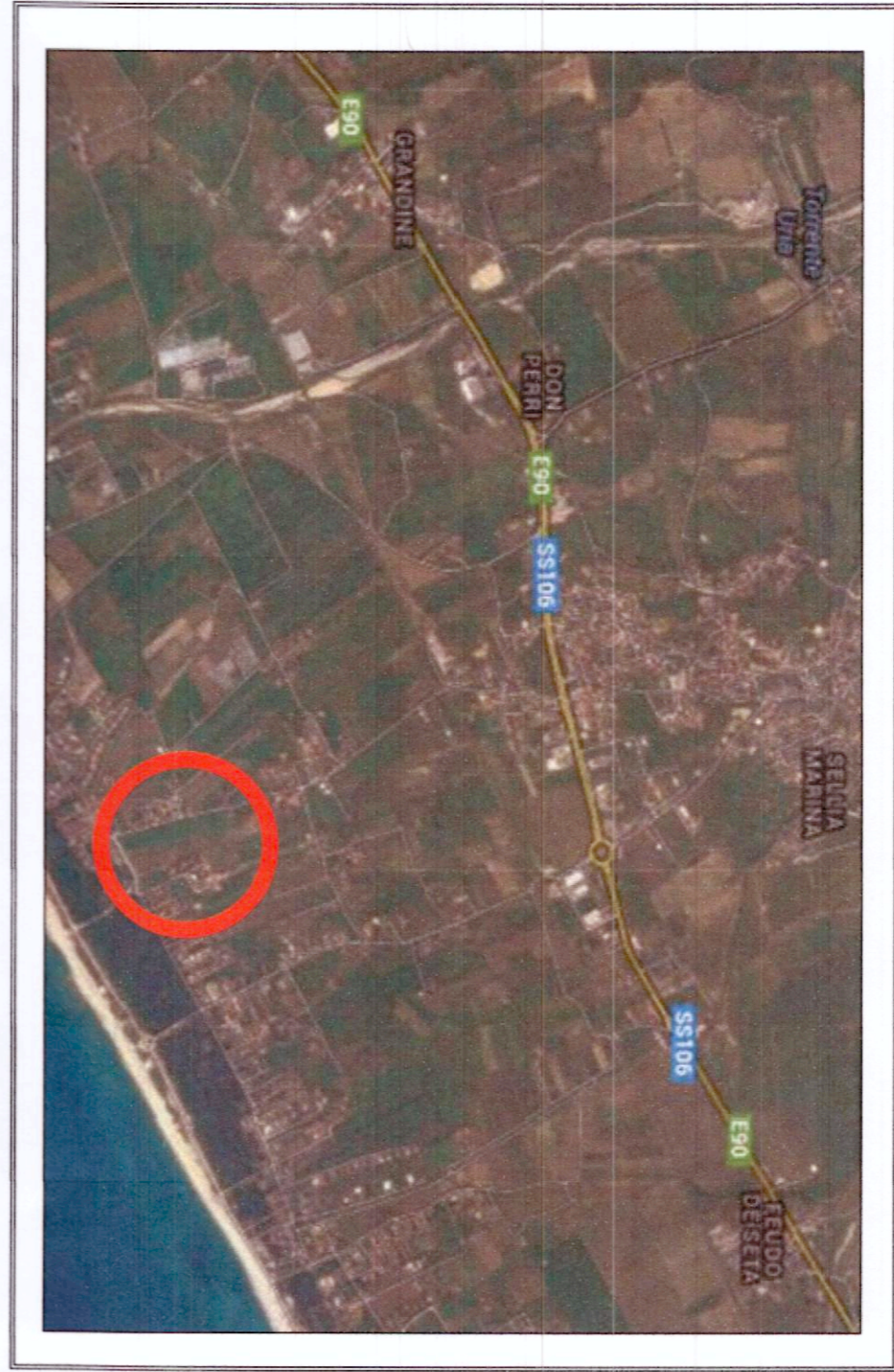


COMUNE
DI
SELLIA MARINA
(PROVINCIA DI CATANZARO)

PROGETTO: IMPIANTO PRODUTTIVO AL COPERTO TURISTICO -
RESIDENZIALE - COMPLESSO UNITA' ABITATIVE PER
USO STAGIONALE - SCHEDA RIF. N. 61 AT. PT



TIPOLOGIE EDILIZIE - PIANTE, SEZIONI E PROSPETTI

COMMITENTE: FRONTERA FRANCESCO

LOCALITA': CHIARO

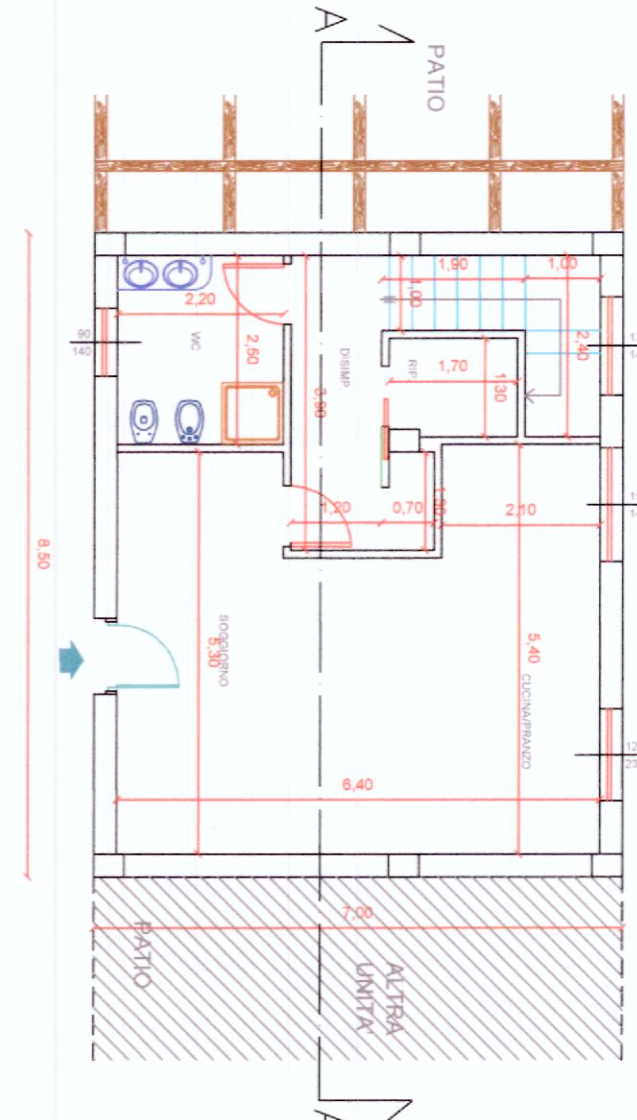
FRONTERA FRANCESCO ALVARO
INGEGNERE
PUBBLICITÀ N. 15
2009/2010
C.A.B. CATANZARO (VV)

direttore dei lavori

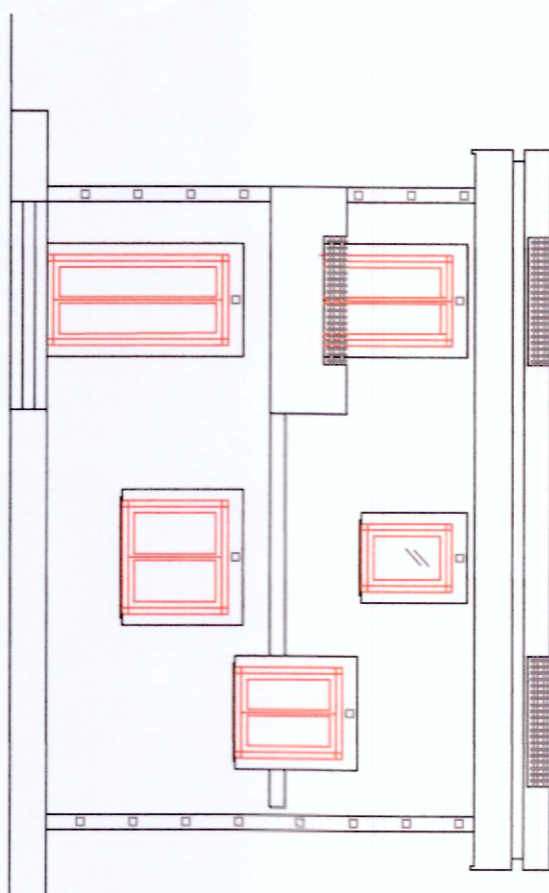
| REV. | DESCRIZIONE REVISIONE | DATA | OGGETTO | PROGETTO ESECUTIVO | SCALA | REV. |
|------|-----------------------|------|-------------|--------------------------|-----------|------|
| A | EMMISSIONE | | TITOLO | ELABORATO ARCHITETTONICO | 1:100 | 0 |
| B | | | DESCRIZIONE | DATA DESCRIZIONE | APPROVATO | |
| C | | | | | | |
| D | | | | | | |

A14

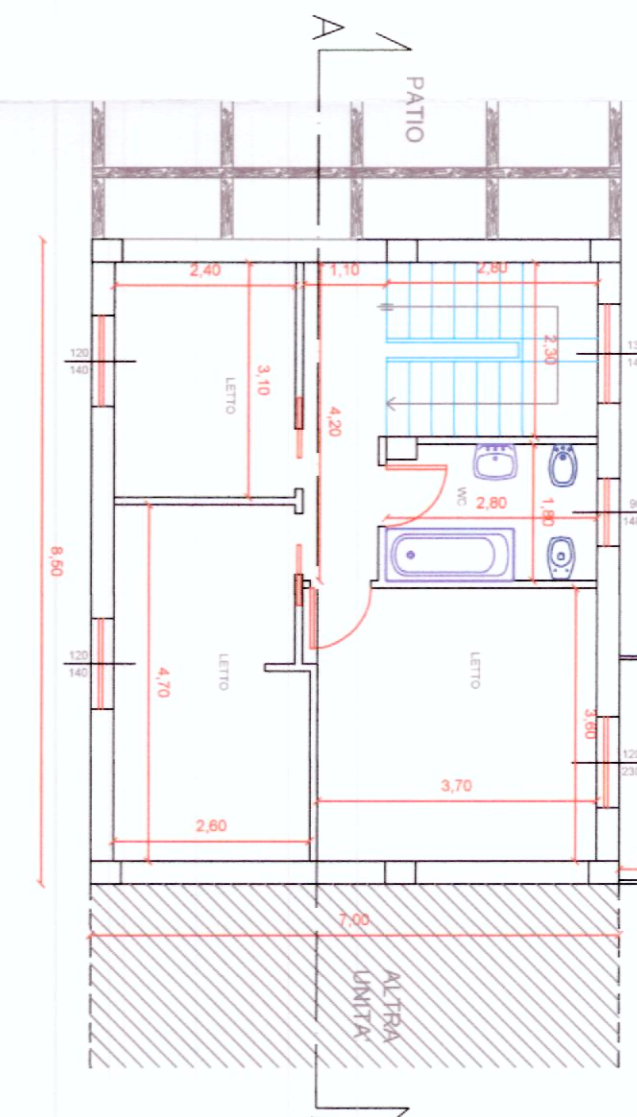
TIPOLOGIA A
PIANTA PIANO TERRA
RA.PP. 1:100



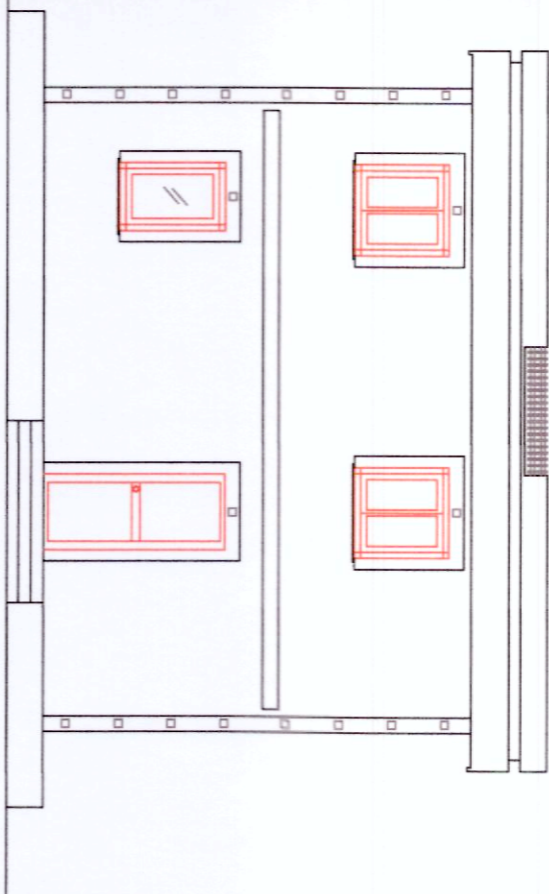
PROSPETTO PRINCIPALE
RA.PP. 1:100



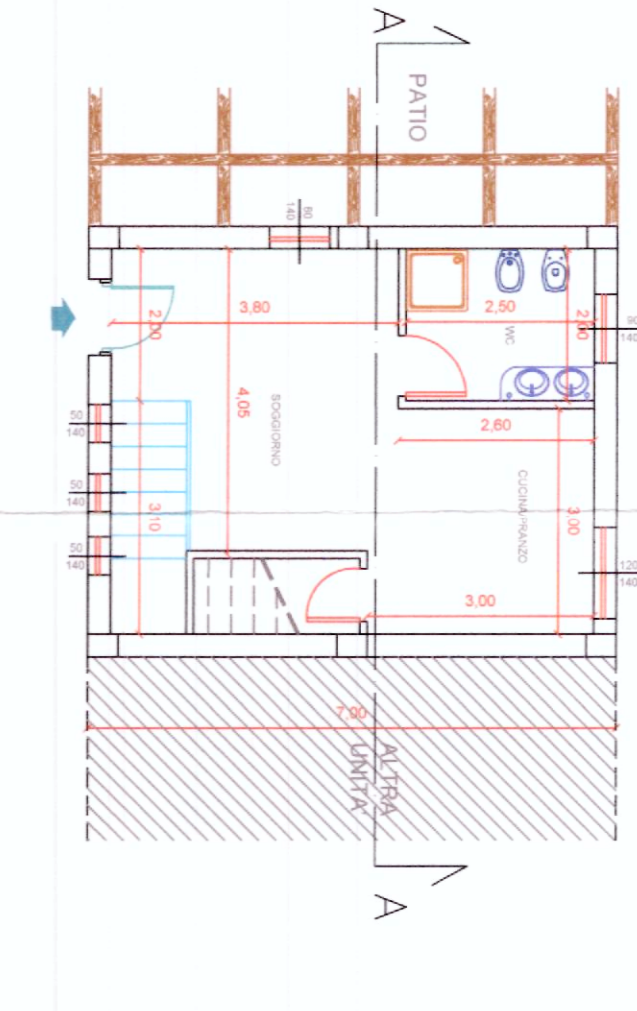
TIPOLOGIA A
PIANTA PIANO PRIMO
RA.PP. 1:100



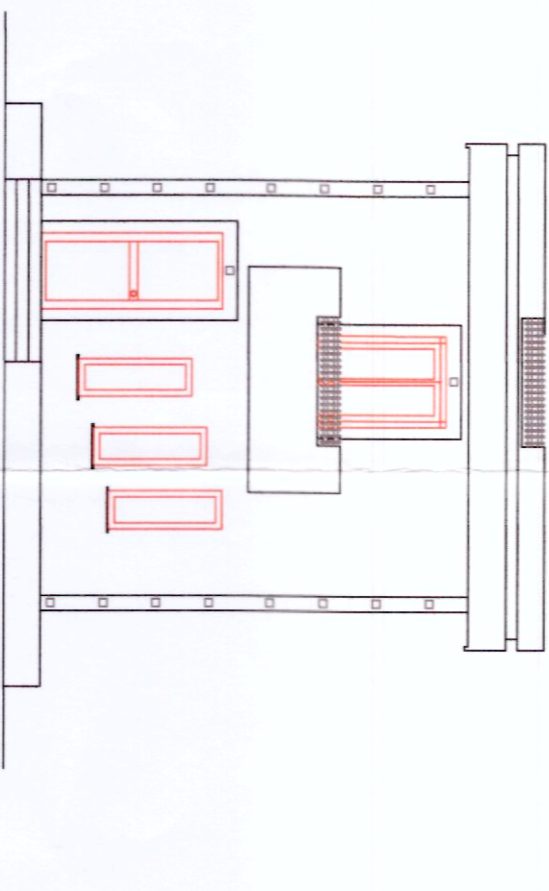
PROSPETTO POSTERIORE
RA.PP. 1:100



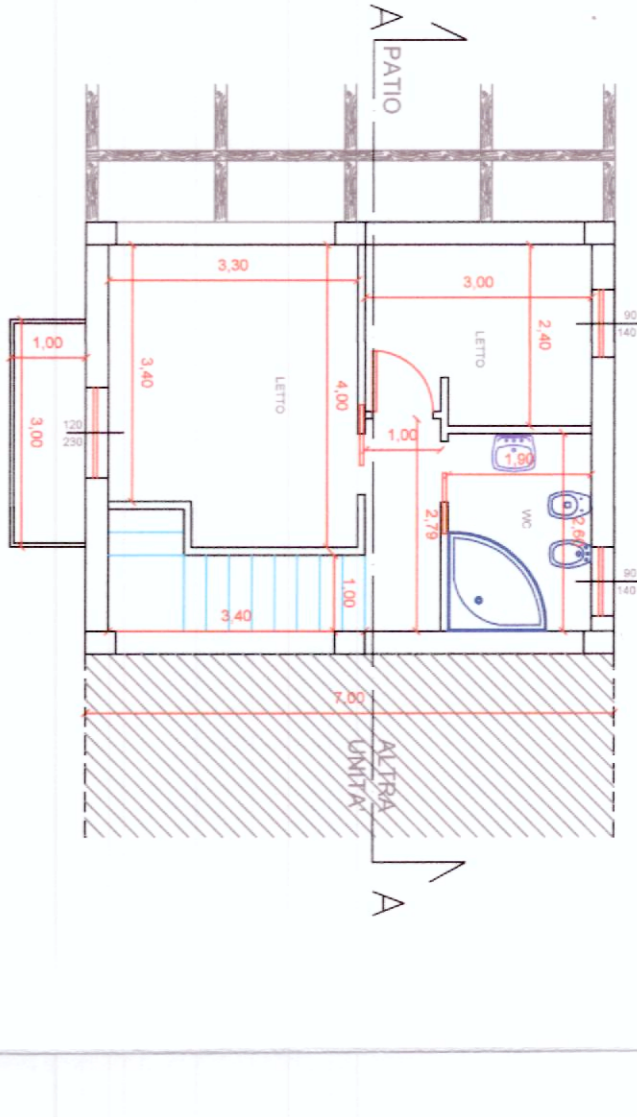
TIPOLOGIA B
PIANTA PIANO TERRA
RA.PP. 1:100



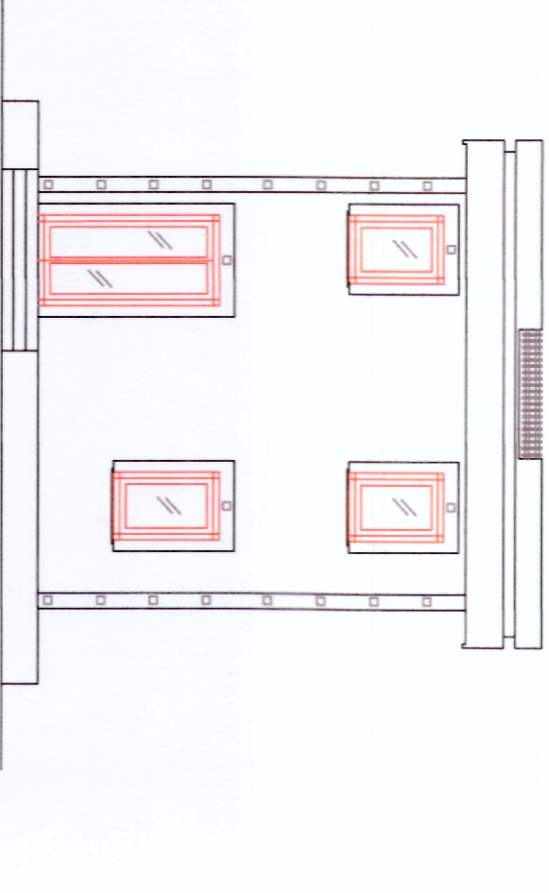
PROSPETTO PRINCIPALE
RA.PP. 1:100



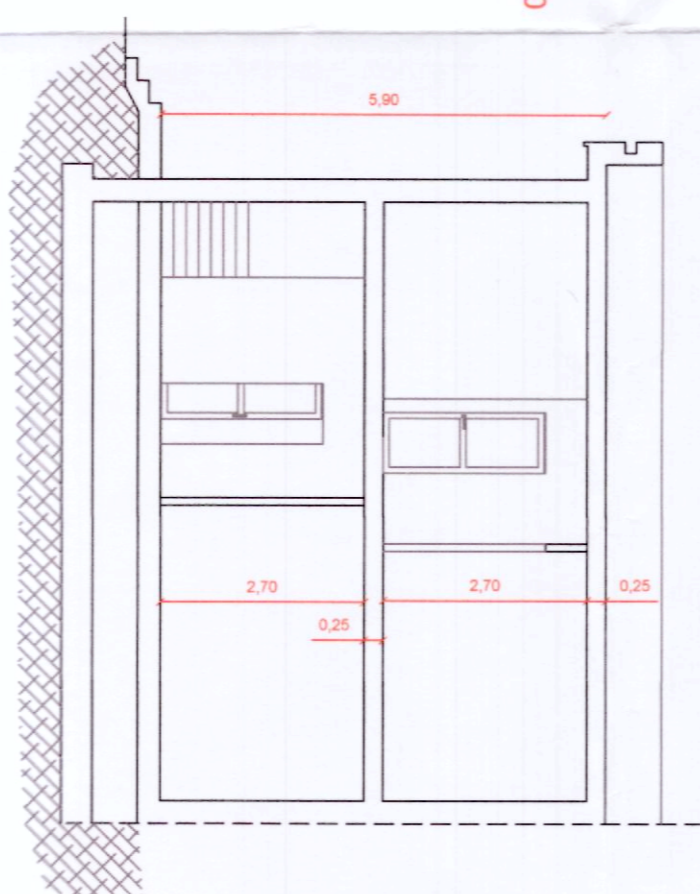
TIPOLOGIA B
PIANTA PIANO PRIMO
RA.PP. 1:100



PROSPETTO POSTERIORE
RA.PP. 1:100

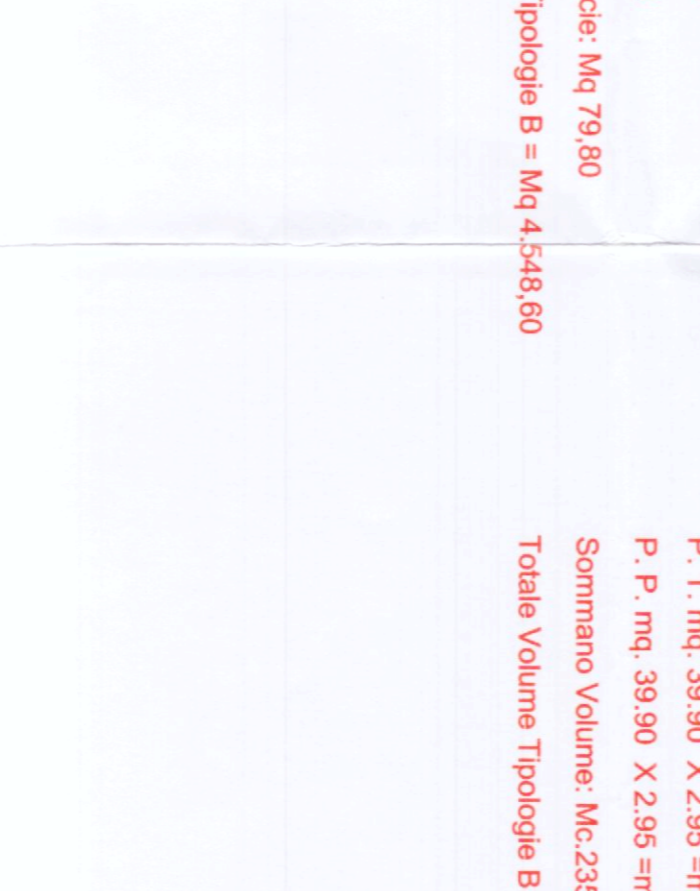


SEZIONI A-A
RA.PP. 1:100



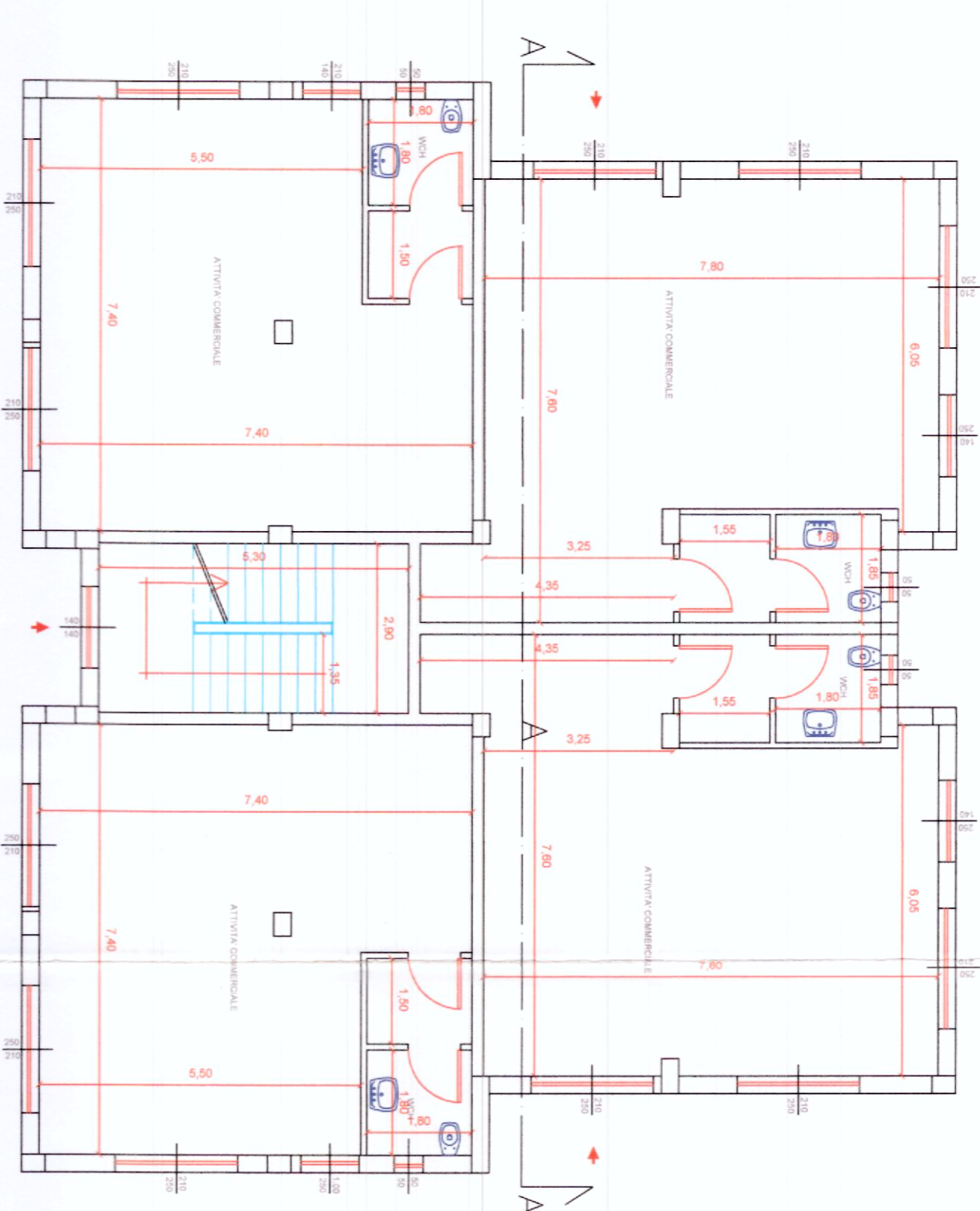
Totale Tipologie A = n. 15
Superficie:
P. T. = mq. 59.50
P. P. = mq. 59.50
Sommano Superficie: Mq. 119.00
Totale Superficie Tipologie A = Mq. 1.765.00
Volume:
P. T. mq. 59.50 X 2.95 = mc. 175.53
P. P. mq. 59.50 X 2.95 = mc. 175.53
Sommano Volume: Mc. 351.06
Totale Volume Tipologie A = Mc. 5.265.90

SEZIONI A-A
RA.PP. 1:100

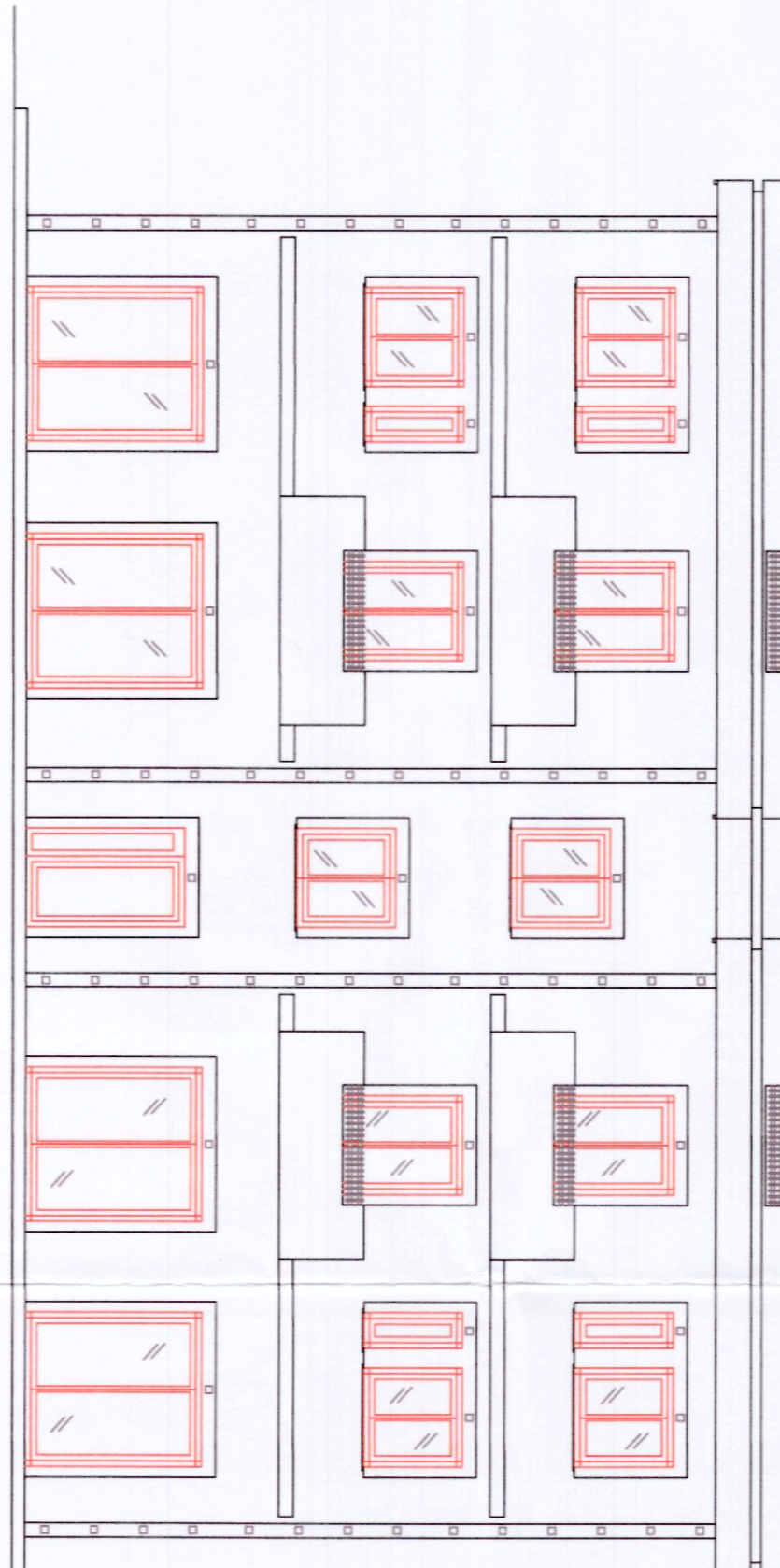


Totale Tipologie B = n. 57
Superficie:
P. T. = mq. 39.90
P. P. = mq. 39.90
Sommano Superficie: Mq. 79.80
Totale Superficie Tipologie B = Mq. 4.548.60
Volume:
P. T. mq. 39.90 X 2.95 = mc. 117.71
P. P. mq. 39.90 X 2.95 = mc. 117.71
Sommano Volume: Mc. 235.42
Totale Volume Tipologie B = Mc. 13.418.94

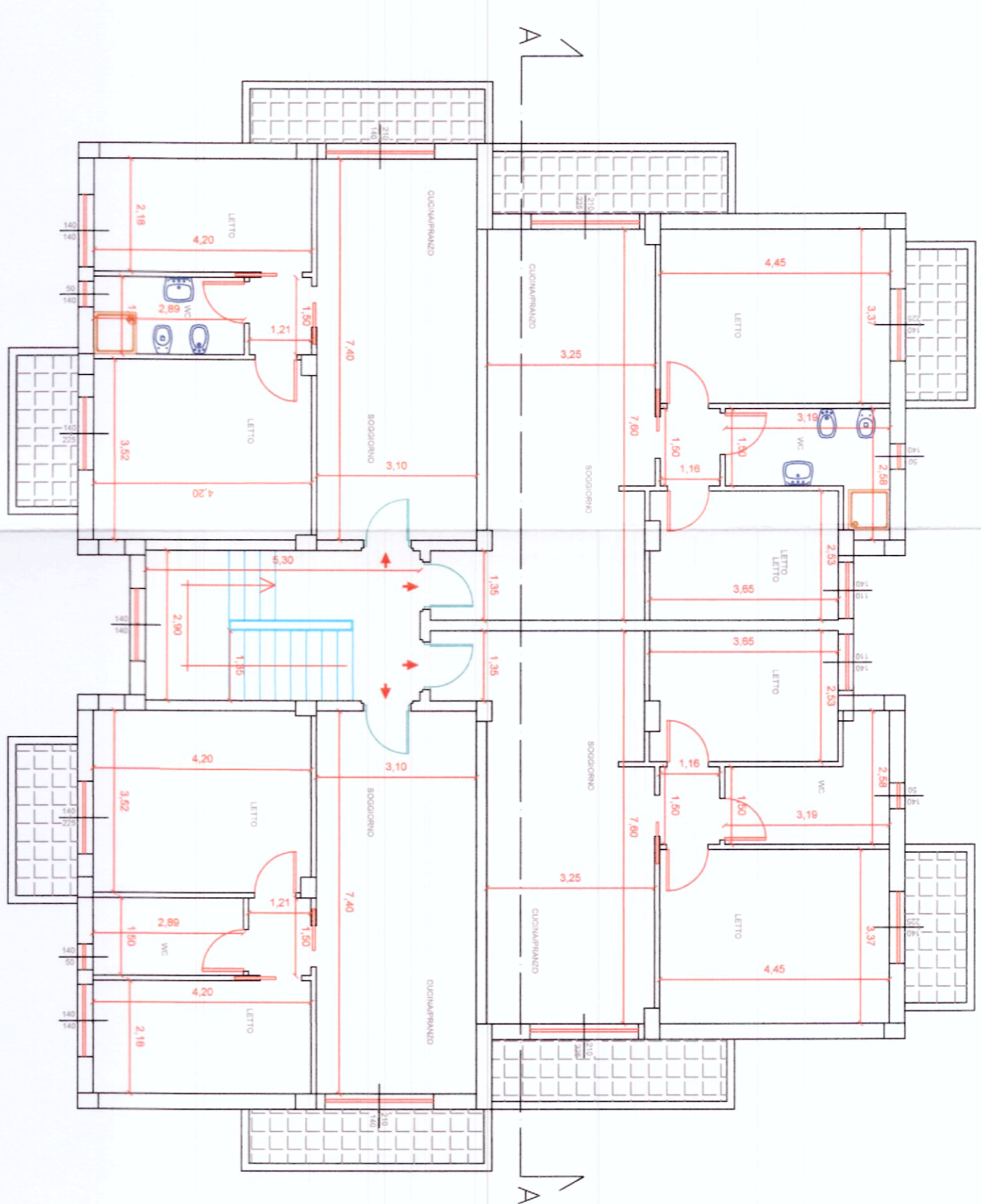
TIPOLOGIA C
PIANTA PIANO TERRA
RA.PP. 1:100



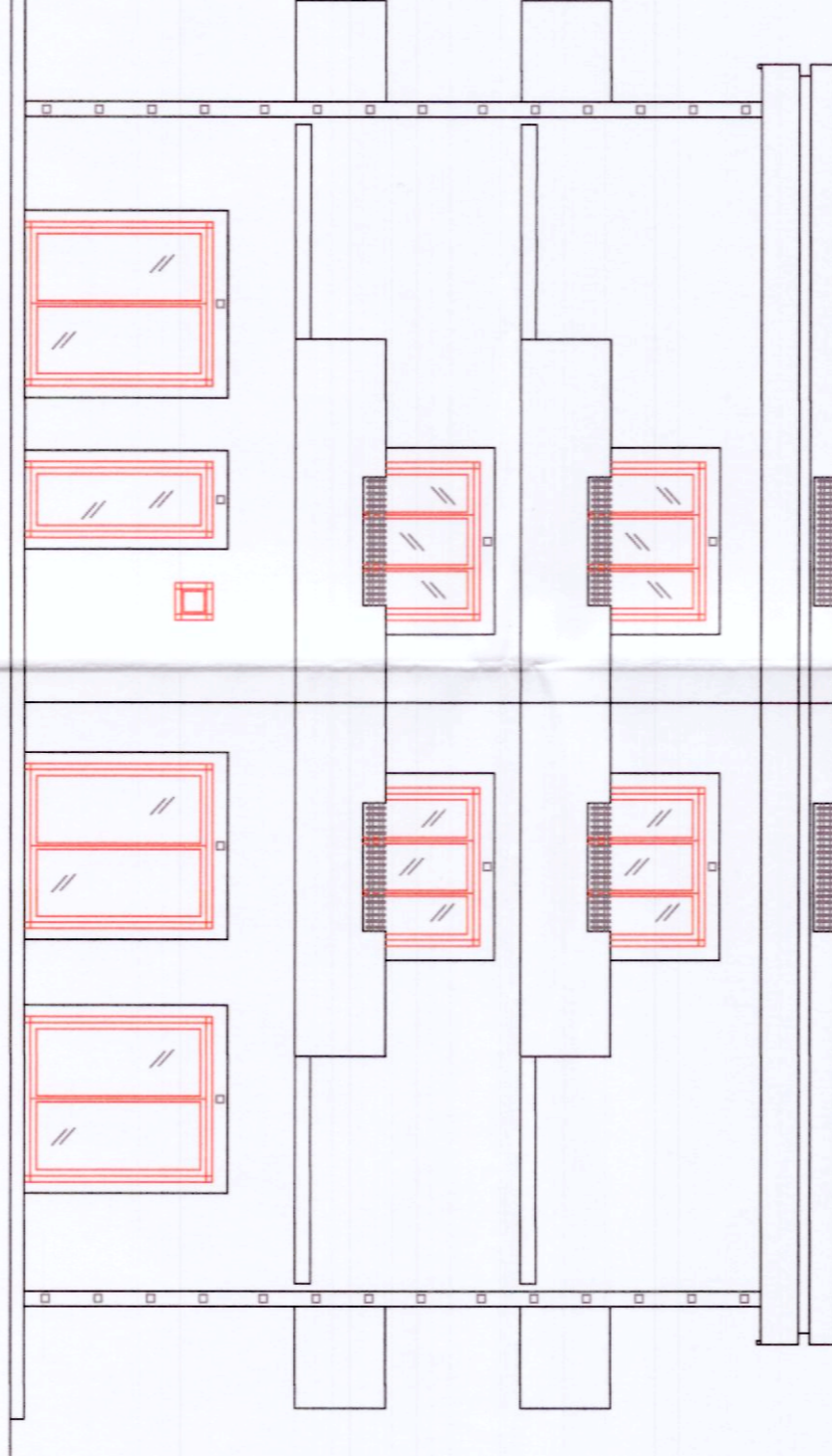
PROSPETTO PRINCIPALE
RA.PP. 1:100



TIPOLOGIA C
PIANTA PIANO TIPO
RA.PP. 1:100



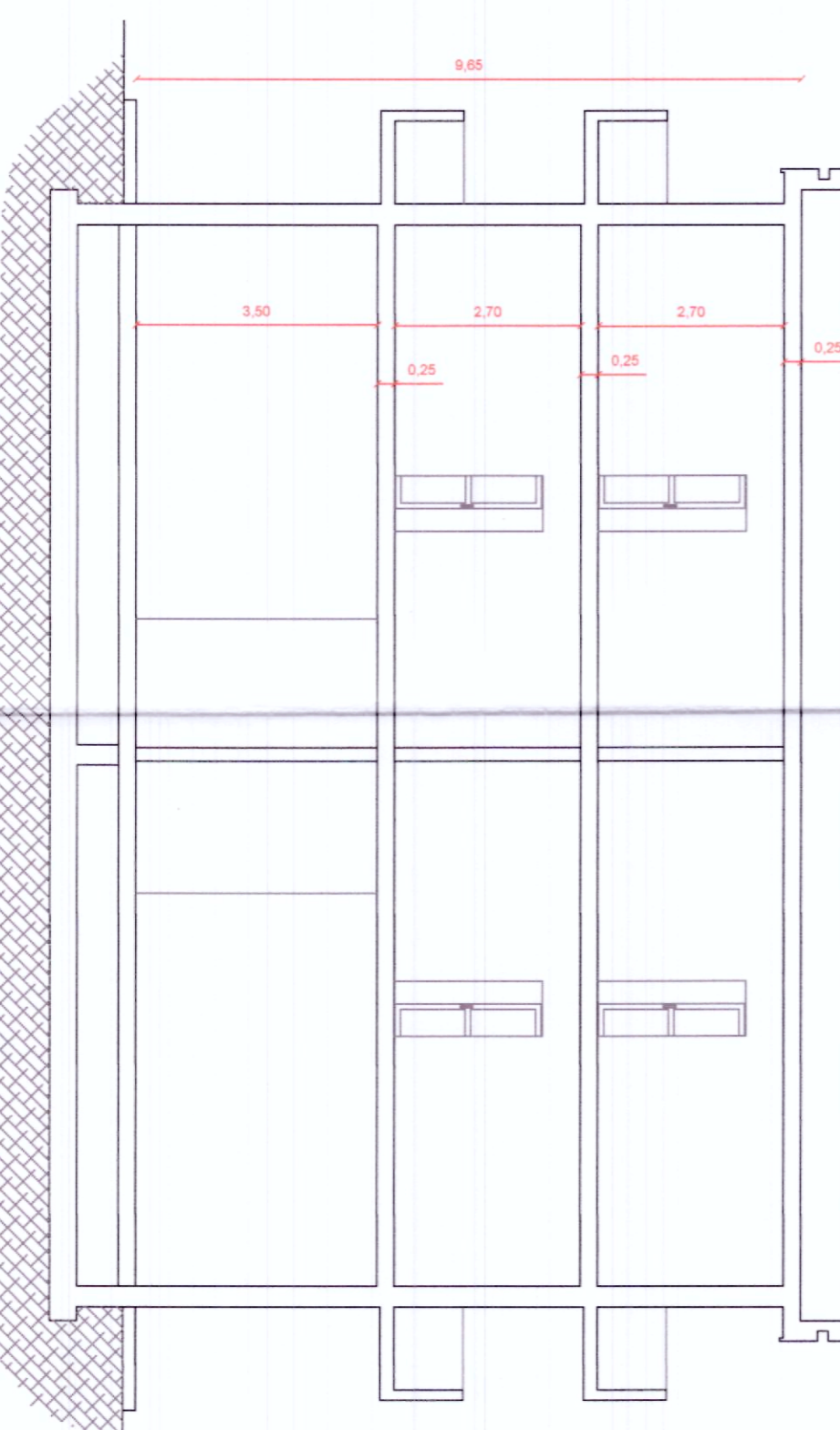
PROSPETTO LATERALE
RA.PP. 1:100



Totale Tipologie C = n. 2

Superficie:
P. T. = mq. 272.20
P. P. = mq. 272.20
P. S. = mq. 272.20
Sommano Superficie: Mq. 816.60
Totale Superficie Tipologie C = Mq. 1.633.20
Volume:
P. T. mq. 272.20 X 3.75 = mc. 1.020.75
P. P. mq. 272.20 X 2.95 = mc. 803.00
P. S. mq. 272.20 X 2.95 = mc. 803.00
Sommano Volume: Mc. 2.626.75
Totale Volume Tipologie C = Mc. 5.253.50

SEZIONI A-A
RA.PP. 1:100



AGGREGAZIONE TIPO
RA.PP. 1:100

